

58

# DRINK AND SKETCH

► WE GAVE MAINE ARCHITECTS AND DESIGNERS A NAPKIN, A PEN, AND A DRINK—HERE'S WHAT THEY CREATED IN 30 MINUTES

PHOTOGRAPHY BY HEIDI KIRN



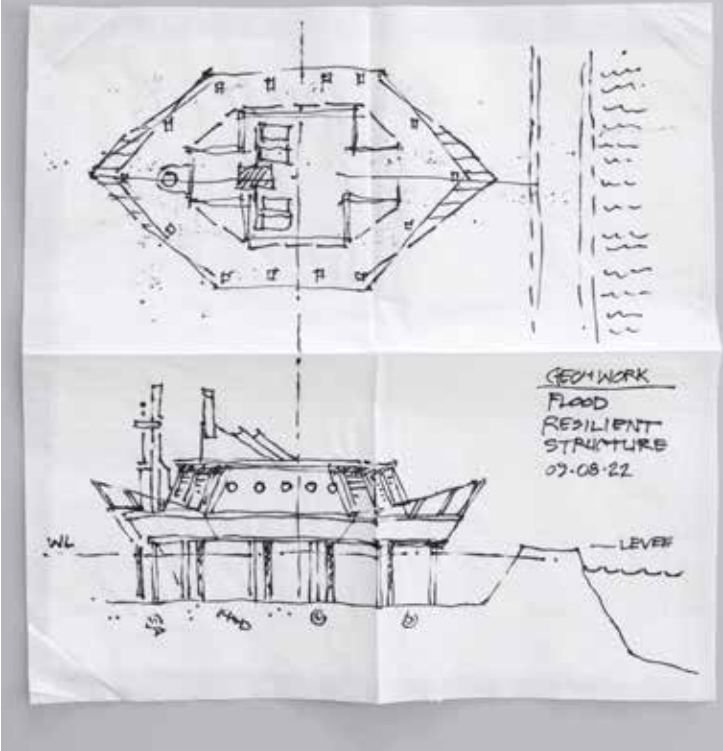


# GEORGE WORKMAN

**JENNY DILLON**  
ARCHITECTURAL DESIGNER AT  
CALEB JOHNSON STUDIO

**PROMPT: HOUSE YOU DREAMED  
YOU WOULD LIVE IN AS A KID**

"In hopes of articulating my childhood vision, this napkin sketch house is full of fun shapes and spaces. As you journey toward this home, the front facade is whimsical with an oversized circular entry door and matching circle windows. Once inside, you venture up the very tall spiral staircase to find a grand observatory equipped with an impressive telescope for stargazing. The right side of the plan shows an interior garden/aviary that spills out to the exterior gardens where you can roam the perfectly manicured trees and hedges and take a rest by the gurgling fountain. My architectural influences were *Rolie Polie Olie* and *Meet the Robinsons*."



In an op-ed for the *New York Times* in 2012, Michael Graves wrote, "It has become fashionable in many architectural circles to declare the death of drawing... What has happened to our profession, and our art, to cause the supposed end of our most powerful means of conceptualizing and representing architecture?" The legendary architect acknowledged that the computer is needed to present data as well as to produce complex construction documents, but an architect's hands should never become obsolete as a creative tool. Throughout history, some of the most iconic designs have been conceived on a napkin, scrap of paper, or placemat. Architectural sketches are part of the designer's thought process and the result of the mind, eyes, and hands working together. *MH+D* and PSA (Portland Society for Architecture) put out a call to Maine designers to come meet us for a drink at Novare Res Bier Café in downtown Portland to create a napkin sketch of their own. Four prompts were passed out, and each designer could do as many or as few sketches as they liked within the time given. Here are the results. You can see additional sketches from the night at [mainehomedesign.com](http://mainehomedesign.com).

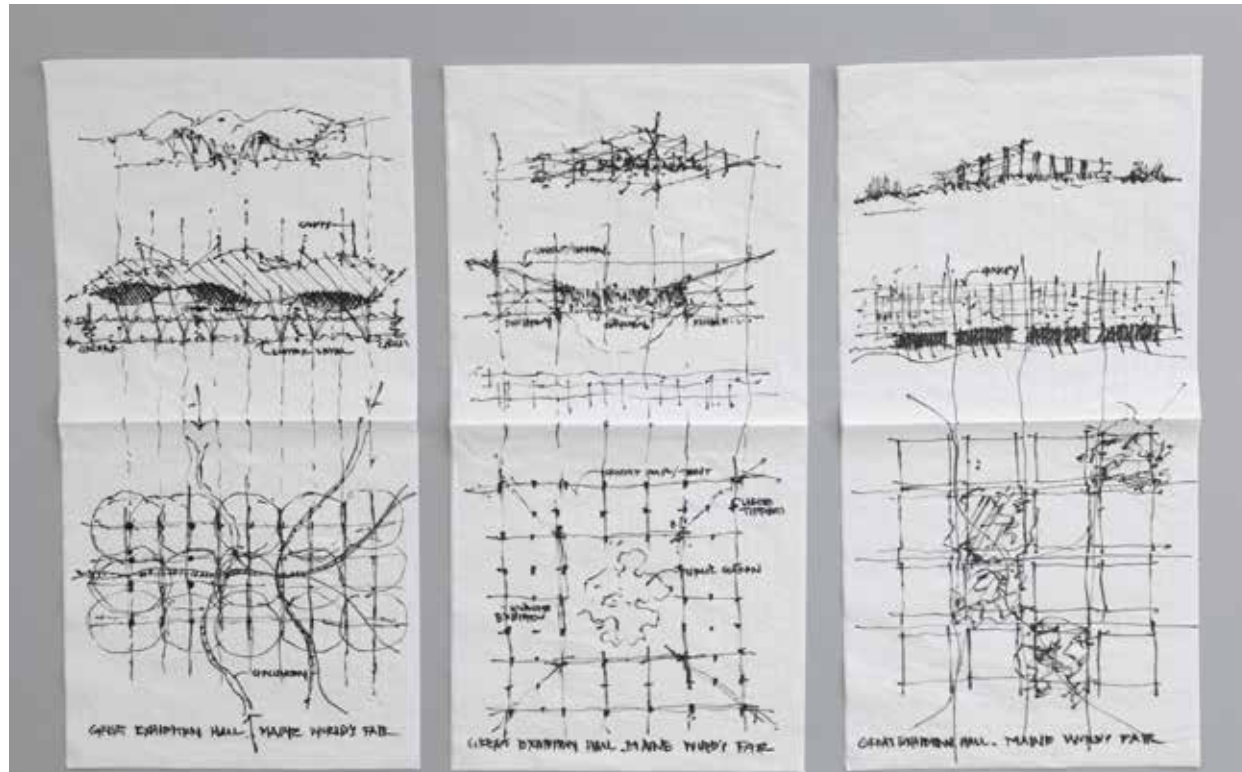
The napkin sketch is often the most exciting architectural drawing of all. It is a quick ideation of structure, circulation, and composition—a simple exercise that shows how design professionals express their creative solutions.

## PROMPTS

Each guest was asked to create a drawing based on one of the following prompts:

- ▶ A HOUSE YOU DREAMED YOU WOULD LIVE IN AS A KID
- ▶ A DESIGN THAT DOESN'T DIRECTLY TOUCH THE GROUND
- ▶ A NEW GATHERING SPACE IN DEERING OAKS PARK
- ▶ A DESIGN UNDER 500 SQUARE FEET

# RUSS TYSON



**DAVID DUNCAN MORRIS**  
AIA, NCARB, DIRECTOR OF DESIGN  
AT CALEB JOHNSON STUDIO

**PROMPT:** A DESIGN THAT DOESN'T  
DIRECTLY TOUCH THE GROUND

"As a kid, I was fascinated by the Robinson family's treehouse in *The Swiss Family Robinson* and these sketches represent a long-imbedded pondering of what it would be like to live in the canopy and soar above the ground. Water is life to me, so I've added it into my fantasy."

# LAUREN ANGST -KBA

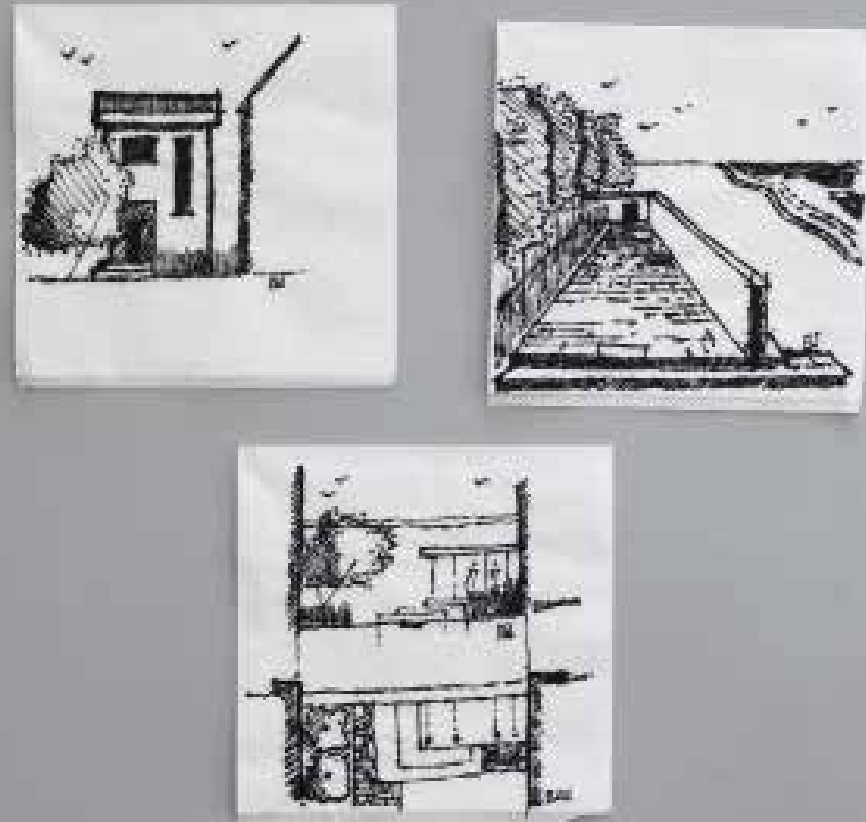


**DAVID DUNCAN MORRIS**  
AIA, NCARB, DIRECTOR OF DESIGN  
AT CALEB JOHNSON STUDIO

**PROMPT:** A DESIGN THAT DOESN'T  
DIRECTLY TOUCH THE GROUND

"As a kid, I was fascinated by the Robinson family's treehouse in *The Swiss Family Robinson* and these sketches represent a long-imbedded pondering of what it would be like to live in the canopy and soar above the ground. Water is life to me, so I've added it into my fantasy."

# ERIC



**DAVID DUNCAN MORRIS**  
AIA, NCARB, DIRECTOR OF DESIGN  
AT CALEB JOHNSON STUDIO

**PROMPT:** A DESIGN THAT DOESN'T  
DIRECTLY TOUCH THE GROUND

"As a kid, I was fascinated by the Robinson family's treehouse in *The Swiss Family Robinson* and these sketches represent a long-imbedded pondering of what it would be like to live in the canopy and soar above the ground. Water is life to me, so I've added it into my fantasy."

# PATRICK BOOTH



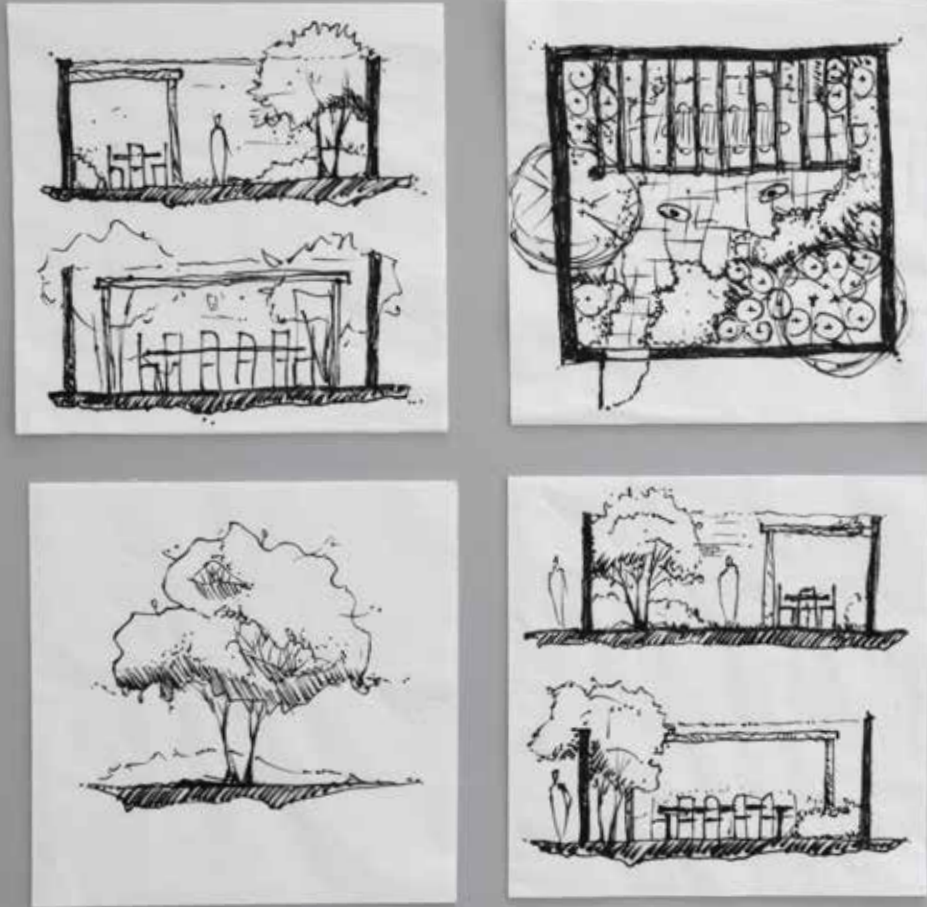
**DAVID DUNCAN MORRIS**  
AIA, NCARB, DIRECTOR OF DESIGN  
AT CALEB JOHNSON STUDIO

**PROMPT:** A DESIGN THAT DOESN'T  
DIRECTLY TOUCH THE GROUND

"As a kid, I was fascinated by the Robinson family's treehouse in *The Swiss Family Robinson* and these sketches represent a long-imbedded pondering of what it would be like to live in the canopy and soar above the ground. Water is life to me, so I've added it into my fantasy."



# MATTHEW CUNNINGHAM



**DAVID DUNCAN MORRIS**  
AIA, NCARB, DIRECTOR OF DESIGN  
AT CALEB JOHNSON STUDIO

**PROMPT:** A DESIGN THAT DOESN'T  
DIRECTLY TOUCH THE GROUND

"As a kid, I was fascinated by the Robinson family's treehouse in *The Swiss Family Robinson* and these sketches represent a long-imbedded pondering of what it would be like to live in the canopy and soar above the ground. Water is life to me, so I've added it into my fantasy."

# ANDREA DIBELLO



**DAVID DUNCAN MORRIS**  
AIA, NCARB, DIRECTOR OF DESIGN  
AT CALEB JOHNSON STUDIO

**PROMPT:** A DESIGN THAT DOESN'T  
DIRECTLY TOUCH THE GROUND

"As a kid, I was fascinated by the Robinson family's treehouse in *The Swiss Family Robinson* and these sketches represent a long-imbedded pondering of what it would be like to live in the canopy and soar above the ground. Water is life to me, so I've added it into my fantasy."

# DAVID MORRIS



**DAVID DUNCAN MORRIS**  
AIA, NCARB, DIRECTOR OF DESIGN  
AT CALEB JOHNSON STUDIO

**PROMPT:** A DESIGN THAT DOESN'T  
DIRECTLY TOUCH THE GROUND

"As a kid, I was fascinated by the Robinson family's treehouse in *The Swiss Family Robinson* and these sketches represent a long-imbedded pondering of what it would be like to live in the canopy and soar above the ground. Water is life to me, so I've added it into my fantasy."

# CALEB JOHNSON



**DAVID DUNCAN MORRIS**  
AIA, NCARB, DIRECTOR OF DESIGN  
AT CALEB JOHNSON STUDIO

**PROMPT:** A DESIGN THAT DOESN'T  
DIRECTLY TOUCH THE GROUND

"As a kid, I was fascinated by the Robinson family's treehouse in *The Swiss Family Robinson* and these sketches represent a long-imbedded pondering of what it would be like to live in the canopy and soar above the ground. Water is life to me, so I've added it into my fantasy."



# JUNIPER D+B

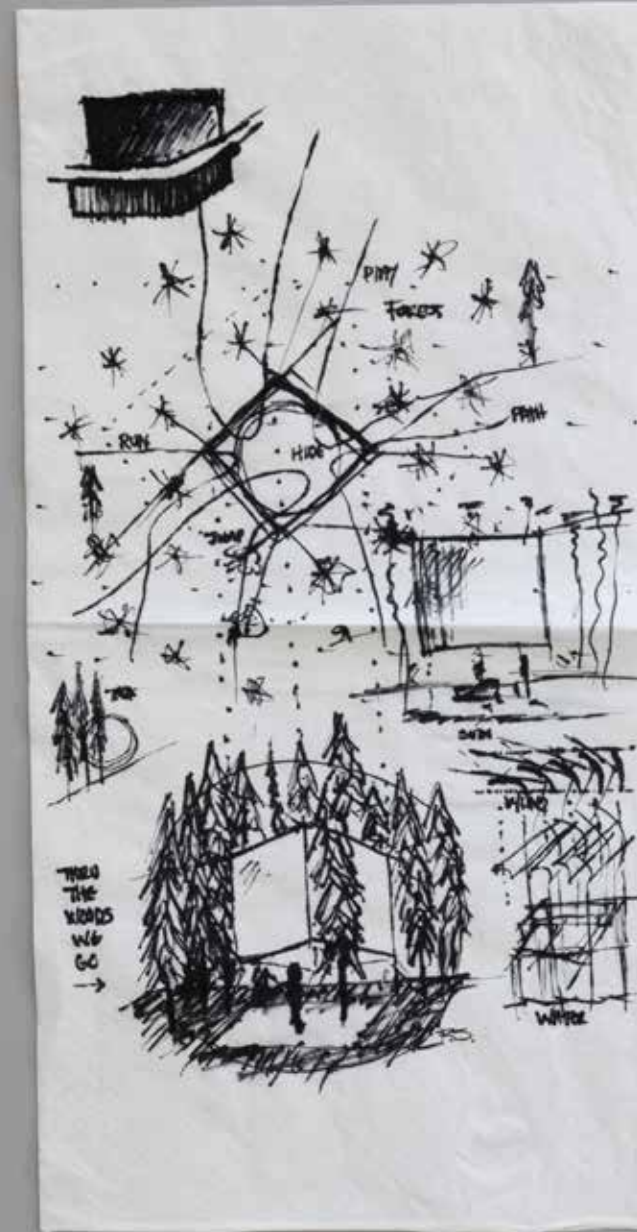


**DAVID DUNCAN MORRIS**  
AIA, NCARB, DIRECTOR OF DESIGN  
AT CALEB JOHNSON STUDIO

**PROMPT:** A DESIGN THAT DOESN'T  
DIRECTLY TOUCH THE GROUND

"As a kid, I was fascinated by the Robinson family's treehouse in *The Swiss Family Robinson* and these sketches represent a long-imbedded pondering of what it would be like to live in the canopy and soar above the ground. Water is life to me, so I've added it into my fantasy."

# RYAN STOKES



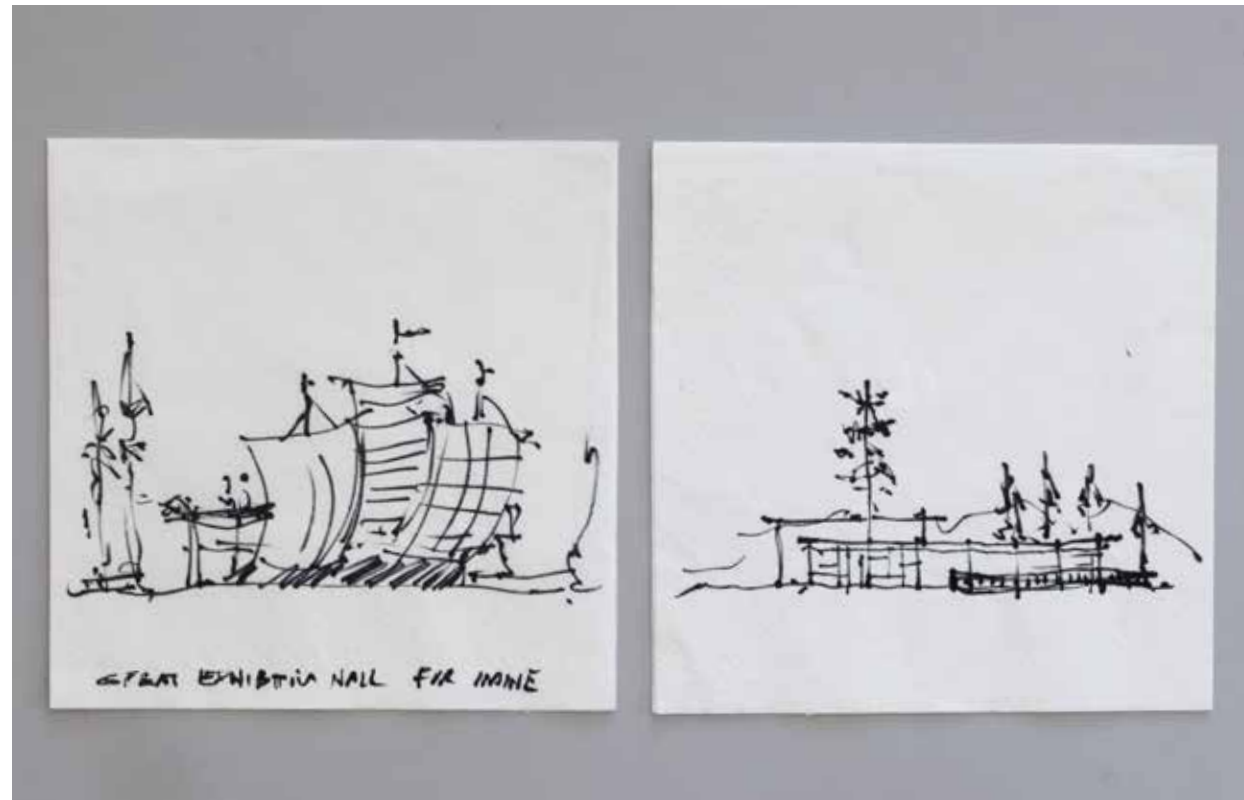
**JENNY DILLON**  
ARCHITECTURAL DESIGNER AT  
CALEB JOHNSON STUDIO

**PROMPT:** HOUSE YOU DREAMED  
YOU WOULD LIVE IN AS A KID

"In hopes of articulating my childhood vision, this napkin sketch house is full of fun shapes and spaces. As you journey toward this home, the front facade is whimsical with an oversized circular entry door and matching circle windows. Once inside, you venture up the very tall spiral staircase to find a grand observatory equipped with an impressive telescope for stargazing. The right side of the plan shows an interior garden/aviary that spills out to the exterior gardens where you can roam the perfectly manicured trees and hedges and take a rest by the gurgling fountain. My architectural influences were *Rolie Polie Olie* and *Meet the Robinsons*."

# LEWANDOWSKI

# LEWANDOWSKI



**DAVID DUNCAN MORRIS**  
AIA, NCARB, DIRECTOR OF DESIGN  
AT CALEB JOHNSON STUDIO

**PROMPT:** A DESIGN THAT DOESN'T  
DIRECTLY TOUCH THE GROUND

"As a kid, I was fascinated by the Robinson family's treehouse in *The Swiss Family Robinson* and these sketches represent a long-imbedded pondering of what it would be like to live in the canopy and soar above the ground. Water is life to me, so I've added it into my fantasy."



**DAVID DUNCAN MORRIS**  
AIA, NCARB, DIRECTOR OF DESIGN  
AT CALEB JOHNSON STUDIO

**PROMPT:** A DESIGN THAT DOESN'T  
DIRECTLY TOUCH THE GROUND

"As a kid, I was fascinated by the Robinson family's treehouse in *The Swiss Family Robinson* and these sketches represent a long-imbedded pondering of what it would be like to live in the canopy and soar above the ground. Water is life to me, so I've added it into my fantasy."



# TIM CARROLL

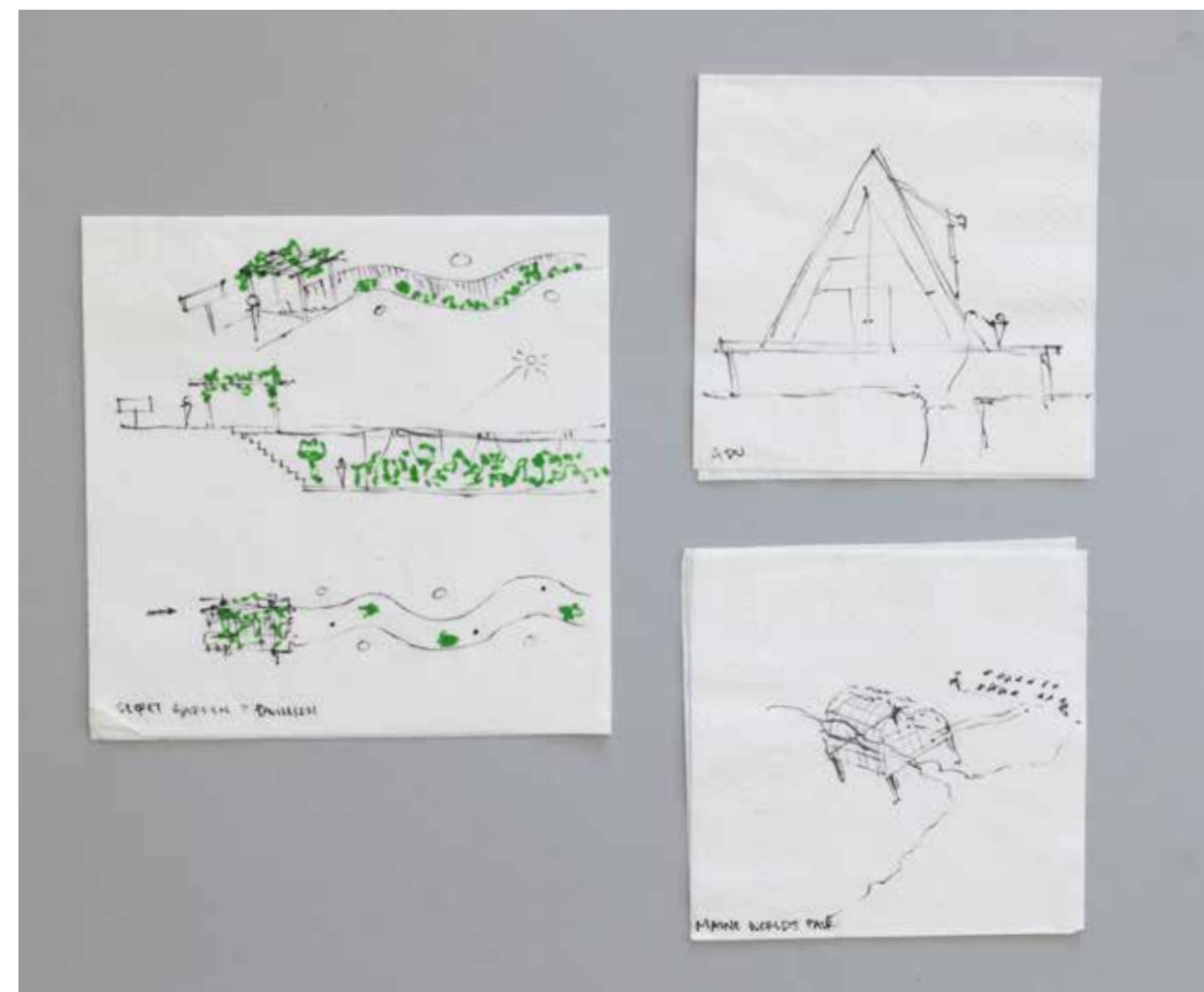


**DAVID DUNCAN MORRIS**  
AIA, NCARB, DIRECTOR OF DESIGN  
AT CALEB JOHNSON STUDIO

**PROMPT:** A DESIGN THAT DOESN'T  
DIRECTLY TOUCH THE GROUND

"As a kid, I was fascinated by the Robinson family's treehouse in *The Swiss Family Robinson* and these sketches represent a long-imbedded pondering of what it would be like to live in the canopy and soar above the ground. Water is life to me, so I've added it into my fantasy."

# REBECCA SARGENT

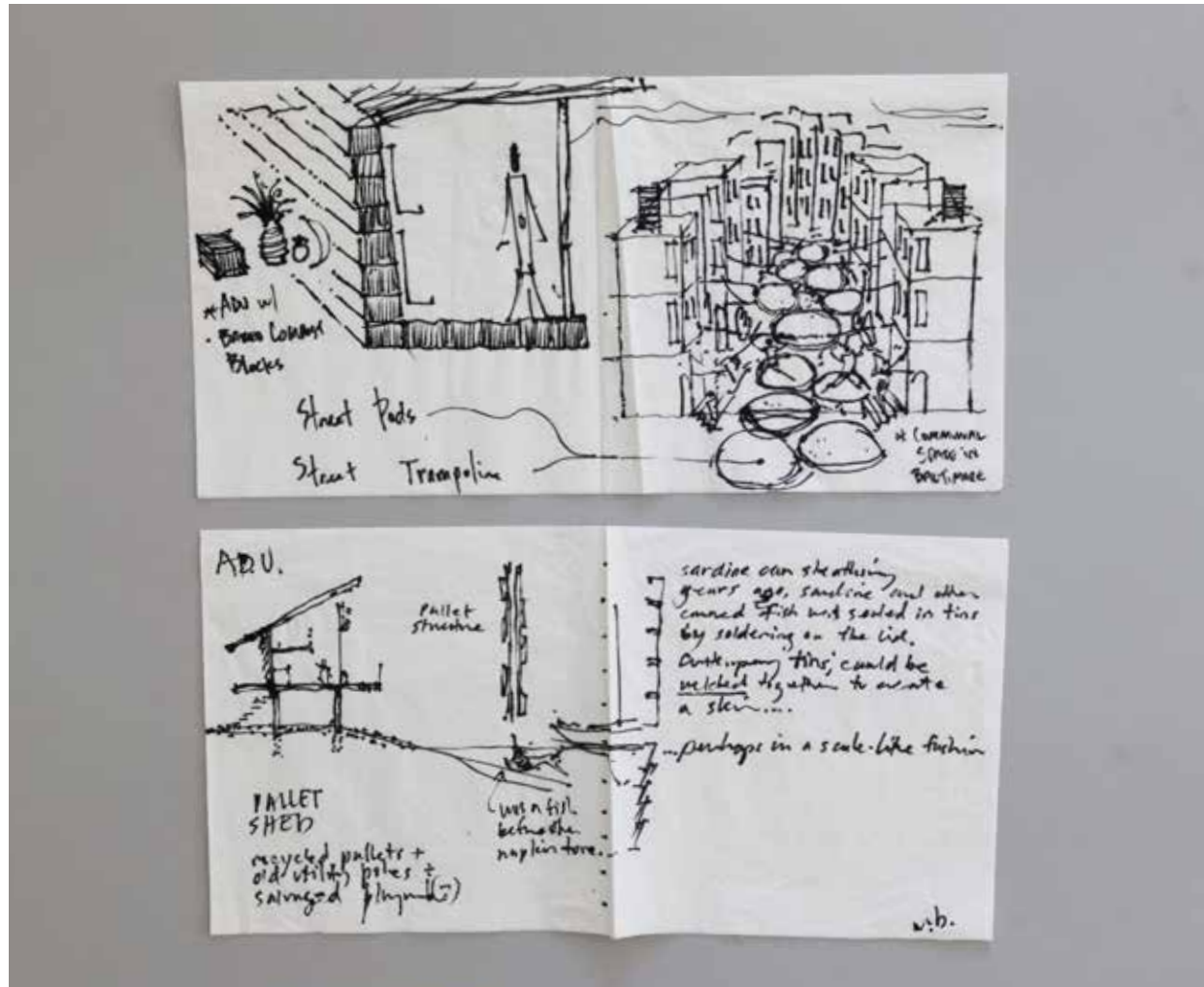


**DAVID DUNCAN MORRIS**  
AIA, NCARB, DIRECTOR OF DESIGN  
AT CALEB JOHNSON STUDIO

**PROMPT:** A DESIGN THAT DOESN'T  
DIRECTLY TOUCH THE GROUND

"As a kid, I was fascinated by the Robinson family's treehouse in *The Swiss Family Robinson* and these sketches represent a long-imbedded pondering of what it would be like to live in the canopy and soar above the ground. Water is life to me, so I've added it into my fantasy."

# MICHAEL BOUCHER

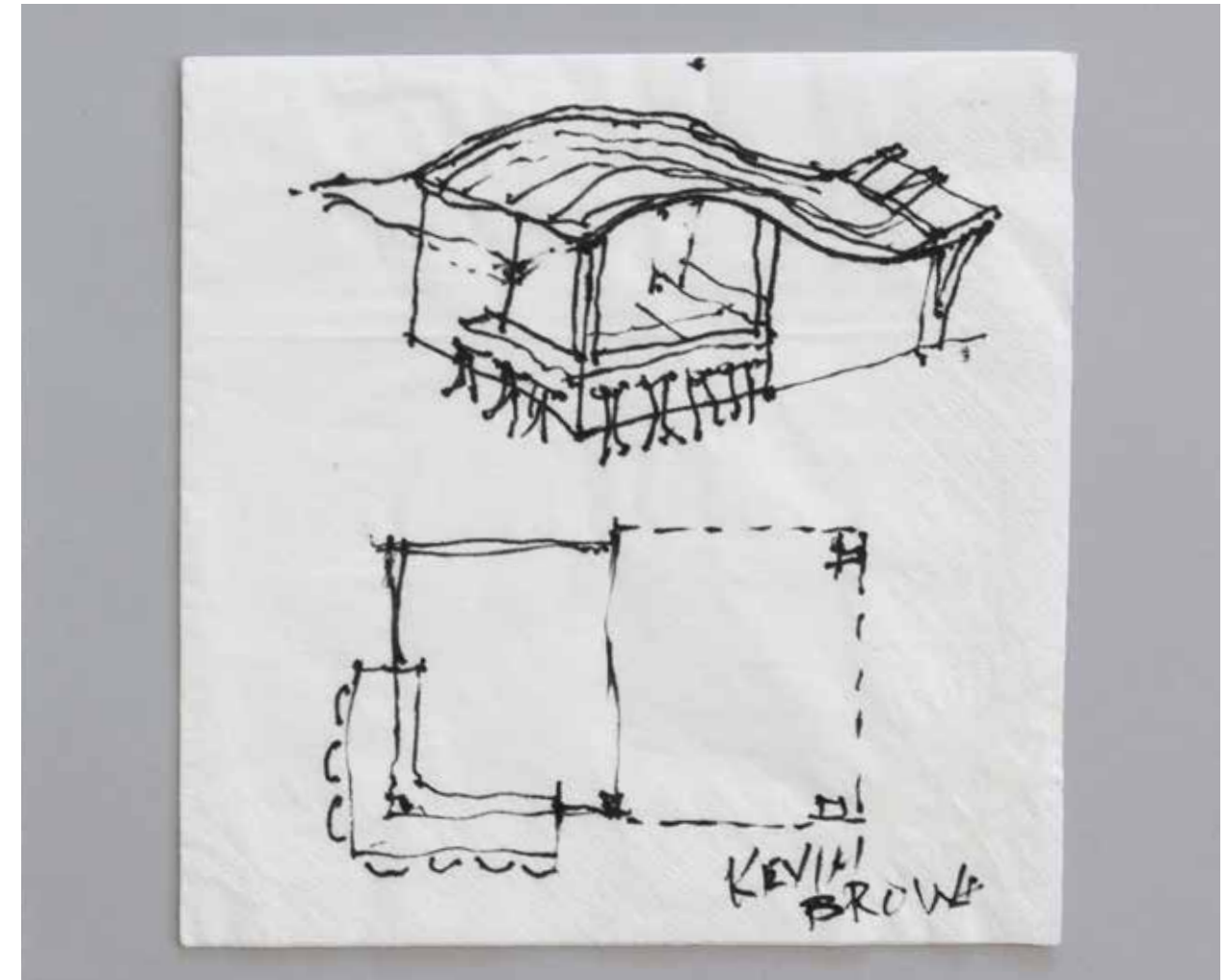


**DAVID DUNCAN MORRIS**  
AIA, NCARB, DIRECTOR OF DESIGN  
AT CALEB JOHNSON STUDIO

**PROMPT:** A DESIGN THAT DOESN'T  
DIRECTLY TOUCH THE GROUND

"As a kid, I was fascinated by the Robinson family's treehouse in *The Swiss Family Robinson* and these sketches represent a long-imbedded pondering of what it would be like to live in the canopy and soar above the ground. Water is life to me, so I've added it into my fantasy."

# KEVIN BROWN



**DAVID DUNCAN MORRIS**  
AIA, NCARB, DIRECTOR OF DESIGN  
AT CALEB JOHNSON STUDIO

**PROMPT:** A DESIGN THAT DOESN'T  
DIRECTLY TOUCH THE GROUND

"As a kid, I was fascinated by the Robinson family's treehouse in *The Swiss Family Robinson* and these sketches represent a long-imbedded pondering of what it would be like to live in the canopy and soar above the ground. Water is life to me, so I've added it into my fantasy."